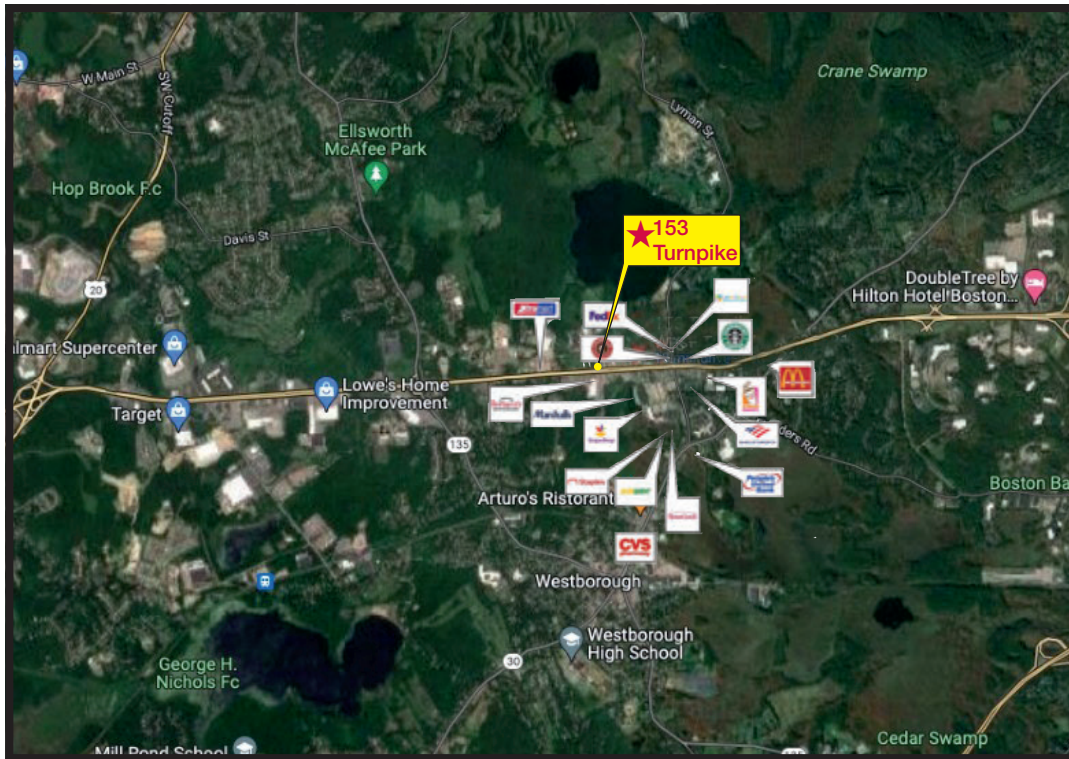
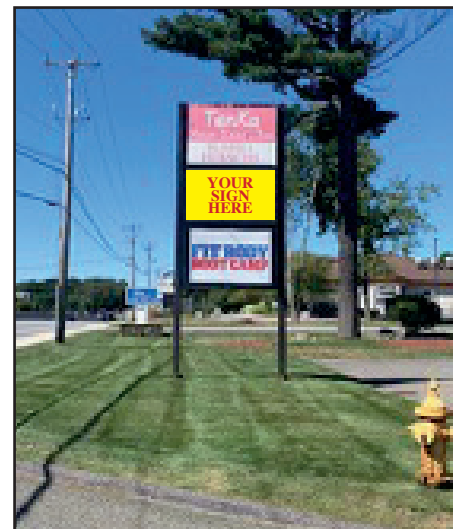


153 Turnpike

Westborough, Massachusetts



Experian Mosaic states that the largest group of people in the 3-5-7 mile radius of this property are “Booming in Confidence” consumers who are prosperous, established couples in peak earning years living in suburban homes. Add that to 45,610 cars daily and a super daily traffic generating tenant mix and you have a great site to grow your brand. The property offers 155 parking spaces - which allows for 5/1000 SF of building area. Pylon sign, with established long term landlord and management company round out the benefits to this location. Call or text to see the space.



DEMOGRAPHICS

Radius	Population	Estimated HH Income	
	2019	Average	Median
3 mile	25,826	\$149,411	\$114,041
5 mile	67,108	\$153,060	\$115,822
7 mile	146,218	\$141,625	\$109,085

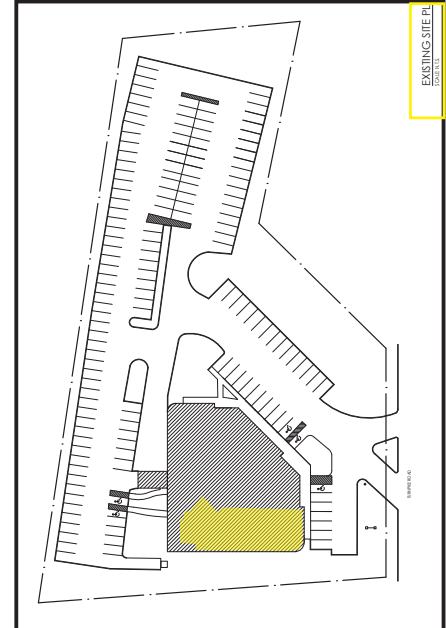
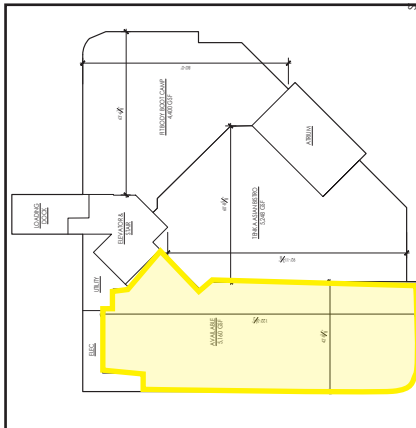
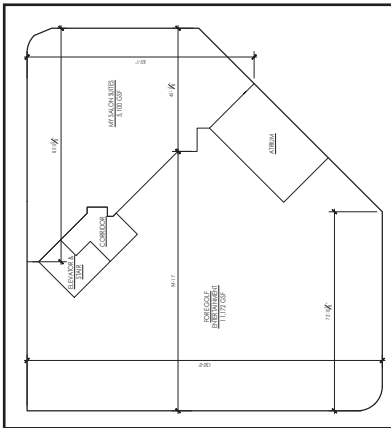
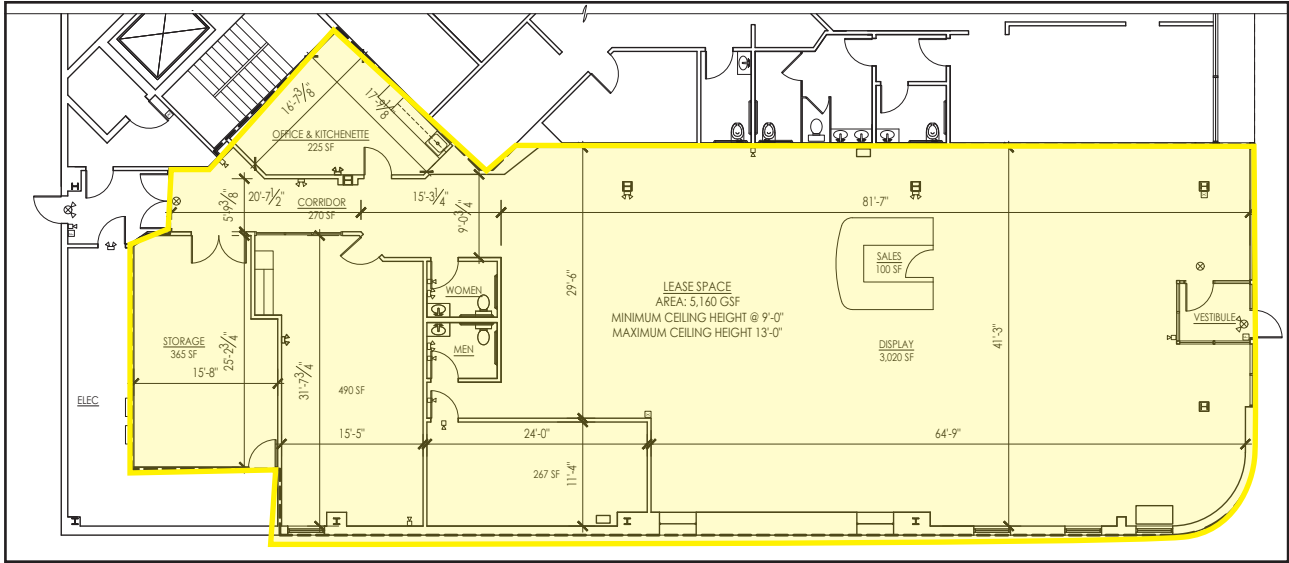
For more information contact:

RETAIL REAL ESTATE ADVISORS

PHONE: 508-254-7676

ria@retailre.com • www.retailre.com

153 Turnpike



For more information contact:

RETAIL REAL ESTATE ADVISORS

PHONE: 508-254-7676

ria@retailre.com • www.retailre.com



The information above has been obtained from sources believed reliable. While we do not doubt its accuracy, we have not verified it and make no guarantee, warranty or representation about it. It is your responsibility to independently confirm its accuracy and completeness. Any projections, opinions, assumptions or estimates used are for example only and do not represent the current or future performance of the property. The value of this transaction to you depends on tax and other factors, which should be evaluated by your tax and financial advisors. You and your advisors should conduct a careful, independent investigation of the property to determine, to your satisfaction, the suitability of the property for your needs.