

# 100 Worcester Road

## Framingham, MA



The Bullseye of the Metro West Market. This site captures the best traffic and visibility in the market. New construction with high efficiency materials and systems. Pylon signage with 60,000 cars a day. This high profile building is directly across the street from the famed Shoppers World and Natick Mall.

Available 2022.

| DEMOGRAPHICS |            |             |                          |           |
|--------------|------------|-------------|--------------------------|-----------|
| Radius       | Population |             | 2020 Estimated HH Income |           |
|              | 2020 (est) | 2025 (proj) | Average                  | Median    |
| 3Miles       | 89,570     | 91,655      | \$116,269                | \$91,440  |
| 5Miles       | 148,796    | 152,608     | \$134,844                | \$106,621 |
| 10Miles      | 435,392    | 446,592     | \$151,278                | \$120,785 |



For more information contact:

### RETAIL REAL ESTATE ADVISORS

PHONE: 508-254-7676

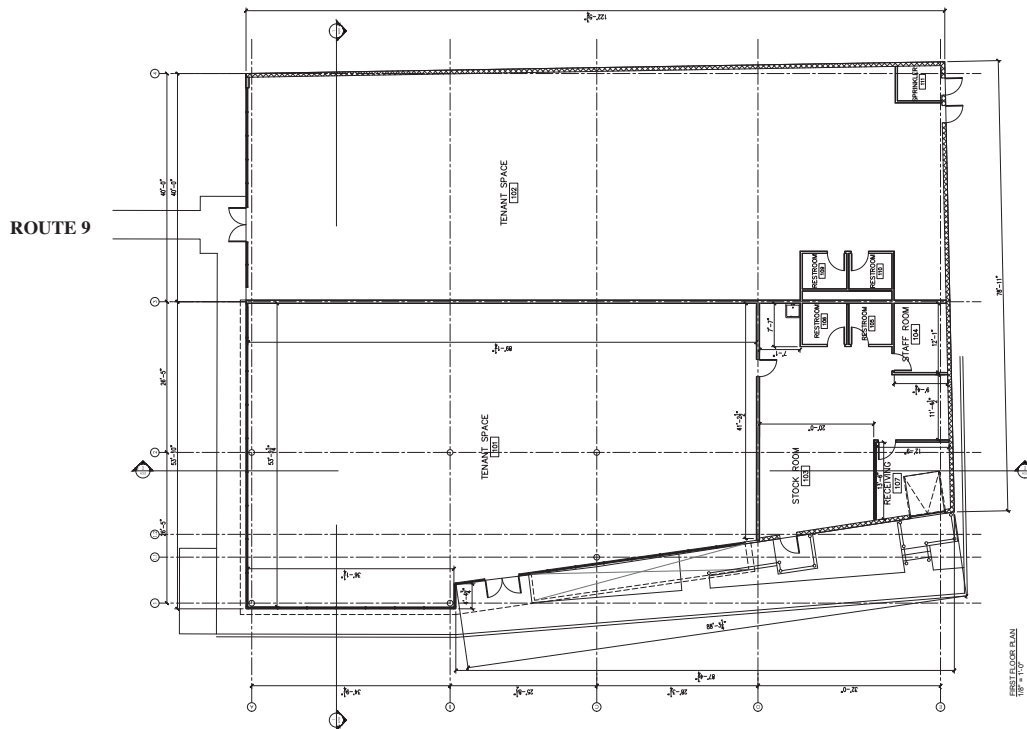
ria@retailre.com

www.retailre.com



The information above has been obtained from sources believed reliable. While we do not doubt its accuracy, we have not verified it and make no guarantee, warranty or representation about it. It is your responsibility to independently confirm its accuracy and completeness. Any projections, opinions, assumptions or estimates used are for example only and do not represent the current or future performance of the property. The value of this transaction to you depends on tax and other factors, which should be evaluated by your tax and financial advisors. You and your advisors should conduct a careful, independent investigation of the property to determine, to your satisfaction, the suitability of the property for your needs.

# 100 Worcester Road Framingham, MA



For more information contact:

**RETAIL REAL ESTATE ADVISORS**

PHONE: 508-254-7676

ria@retailre.com

www.retailre.com

